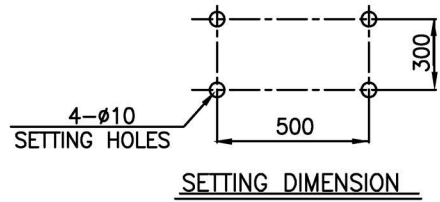
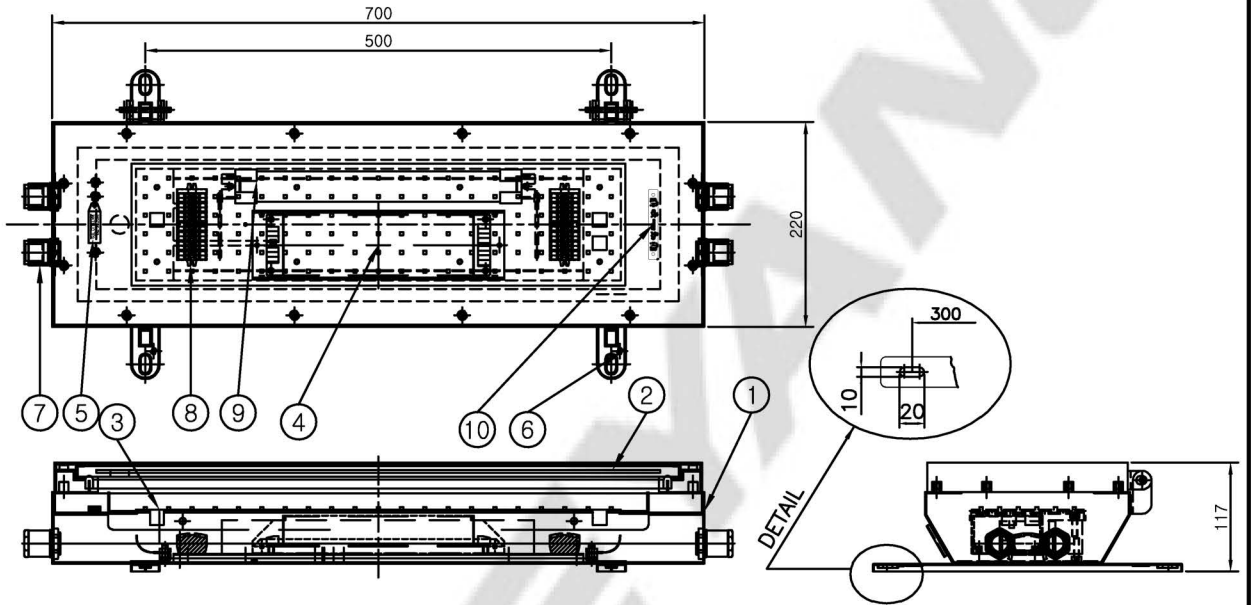


CAPACITY	SYMBOL/ SERIAL NO.	CIRCUIT DIAGRAM
AC230V, 50/60Hz		
25W		



10	LED INDICATOR	-	1		5	THERMOSTAT	-	1	
9	BATTERY PACK	-	1		4	LED BATTERY BACKUP driver	-	1	
8	TERMINAL BLOCK	NYLON	2	CLAMPING 8P	3	LED module	-	1	
7	CABLE GLAND(M25)	BRASS	2	OSNJ 25 (φ13~φ20)	2	TRANSPARENT HEATER	TEMPERED GLASS	1	
6	OUTSIDE EARTH BOLT	STAINLESS STEEL316	1	M5	1	BODY	STAINLESS STEEL316L	1	
NO	NAME OF PARTS	MATERIAL	Q'TY	REMARKS	NO	NAME OF PARTS	MATERIAL	Q'TY	REMARKS

APPROVED	S . H. HONG	UNIT	mm
CHECKED		SCALE	N/S
DRAWING	J. Y. LEE	COLOR	N-9.3
DATE	2017.06.01	IP	66

TITLE; LED CEILING LIGHT (SURFACE, BATTERY BACKUP TYPE) FOR MARINE USE

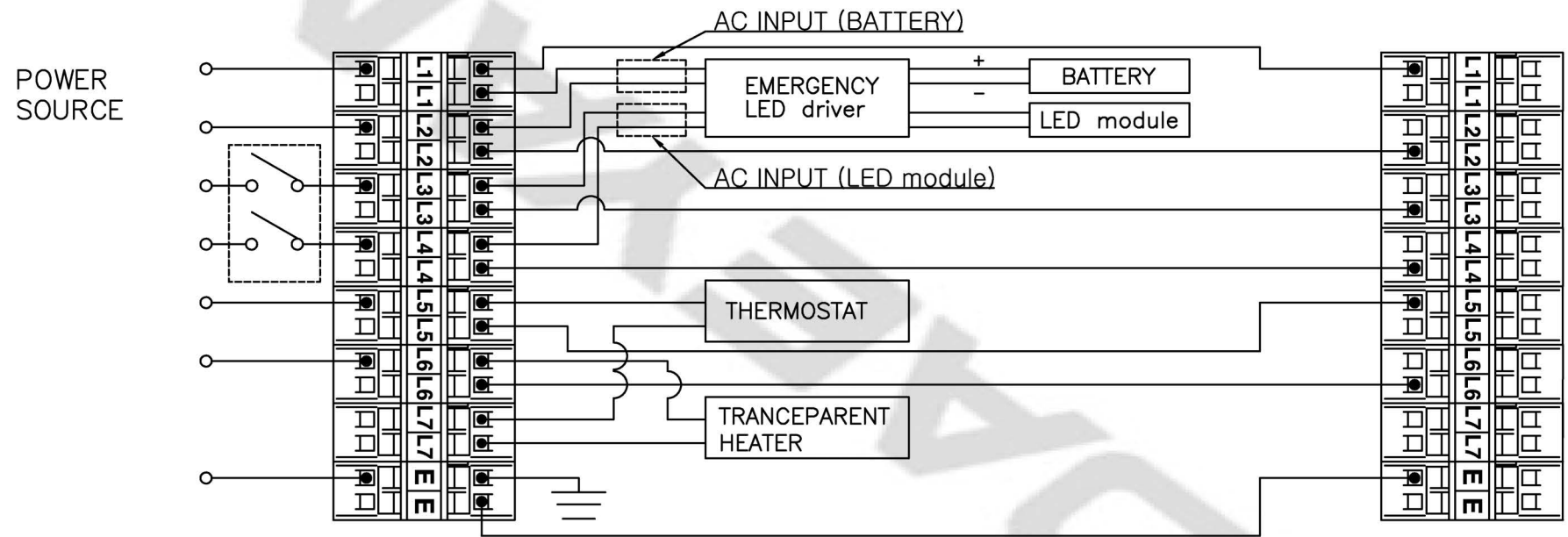
	MODEL NO.	LEB125WSP-0235UWNMBb4C50-I	WEIGHT	16 Kg
	DWG NO.	LO1450168	SHEET NO.	31

NO	CONTENT	DATE	REVISER	APPROVAL
△				
△				
△				

- NOTE -

\* INDICATION LAMP COLOR STATUS

NO	LED		MODE
	GREEN	RED	
1	Steady	-	Full charged
2	Flicker	-	Charging
3	-	-	Discharging
4	-	Flicker	Battery fault



-NOTE-

1. TRANSPARENT HEATER CAPACITY  
-HEATER CAPACITY : 155±5 W  
-OPERATING TEMPERATURE : -45 °C~+45 °C
2. Heaters should be operate below -30 °C
3. The transparent heater should always be supplied with the heater power source for normal operation of battery at emergency period of low temperature.
4. THERMOSTAT OPERATING TEMPERATURE : 7 °C
5. EMERGENCY DURATION : 3 hr
6. CHARGING TIME : 32 hr

TITLE: LEB125WSP-0550UWNMBb4w16C50-1  Connection Diagram	SCALE	1/1	UNIT	MM	NO.	REVISED
	PROJECT METHOD		WEIGHT	KG	△	
	APPROVED	B. K. KIM			MATERIAL	ASS'Y
	CHECKED	W. J. JI			DWG NO.	
	DRAWN	B. I. KIM			SHEET NO.	31-A
	DATE	2018. 02. 01				

**1) OPERATION / 작동**

When AC power fails, the Emergency Ballast immediately switches to the discharging mode, operating one lamp at a reduced lumen output for a minimum of 90 minutes(36W) or 3 hours(18W) .

When AC power is restored, the Emergency Ballast automatically returns to the charging mode.

·Charging time : minimum 24hr

·Discharging time : FL18W, 1Lamp-3hr / FL36W, 1Lamp-90min

AC 전원이 공급되지 않을 때, 비상 안정기는 즉시 방전 모드로 전환됩니다.

한 개의 램프가 최소 90분(36W) or 3시간(18W) 동안 감소된 광속 출력으로 작동하며 AC 전원이 다시 공급되면, 비상 안정기는 자동적으로 충전 모드로 전환됩니다.

·충전시간 : 최소 24시간

·방전시간 : FL18W 1Lamp-3시간 / FL36W, 1Lamp-90분

**2) INDICATOR LAMP COLOR STATUS / 상태 표시 램프 색상**

The indicator shows the degree of battery charging and discharging.

표시기는 배터리 충전 및 방전 상태를 보여줍니다.

No.	LED(RED)	MODE
1	LAMP ON	CHARGING / FULL CHARGED
2	LAMP OFF	DISCHARGING / FULL DISCHARGED

순번.	표시램프(적색)	작동모드
1	램프 점등	충전 중 /완전충전
2	램프 소등	방전 중 /방전 완료

**3) DIRECTIONS FOR THE USE / 사용 시 주의사항**

Wiring should be implemented strictly following manufacturer's drawing; any damage caused by improper wiring is not covered by warranty policy.

Test of emergency condition, such as battery discharging time test, should be executed when the battery is fully charged.

The battery connector must be disconnected from battery during construction & test period of vessel, where frequent cut-off of the power source could be happened.

And, Please connect a separate battery connector just before the sea-trial or when normal operation only.

Otherwise, the performance and lifespan of the battery will be significantly deteriorated.

결선은 공급자의 도면에 따라서 엄격하게 시행되어야 하며,

부적절한 결선으로 야기된 위험은 보증 정책이 적용되지 않습니다.

배터리 방전시간 시험과 같은 비상상태에서의 시험은 배터리가 완전 충전되었을 때 실행해야 합니다.

배터리는 커넥터는 전원이 자주 차단되는 선박의 공사 & 시험기간 동안에는 배터리로 부터 분리해야 합니다. 그리고, 분리된 배터리 커넥터는 시운전 직전 또는 정상 사용 시에 연결하십시오. 그렇지 않을 경우, 배터리의 성능과 수명은 현격하게 저하 됩니다.)

APPROVED	B. K. KIM	UNIT	MM
CHECKED		SCALE	N/S
DRAWING	B. I. KIM	COLOR	-
DATE	2016.02.17	IP	-

TITLE;

**BATTERY BACKUP  
Information Sheet  
(Bodine Em'cy Ballast / BDL60u)**



SHEET NO. 31-B